

INCANDESCENT NAVIGATION LIGHTS - MAINTENANCE PRACTICES

1. General

- A. This section gives the removal/installation procedures for the incandescent stinger navigation light and wing tip navigation light.

2. Stinger Navigation Light Removal/Installation

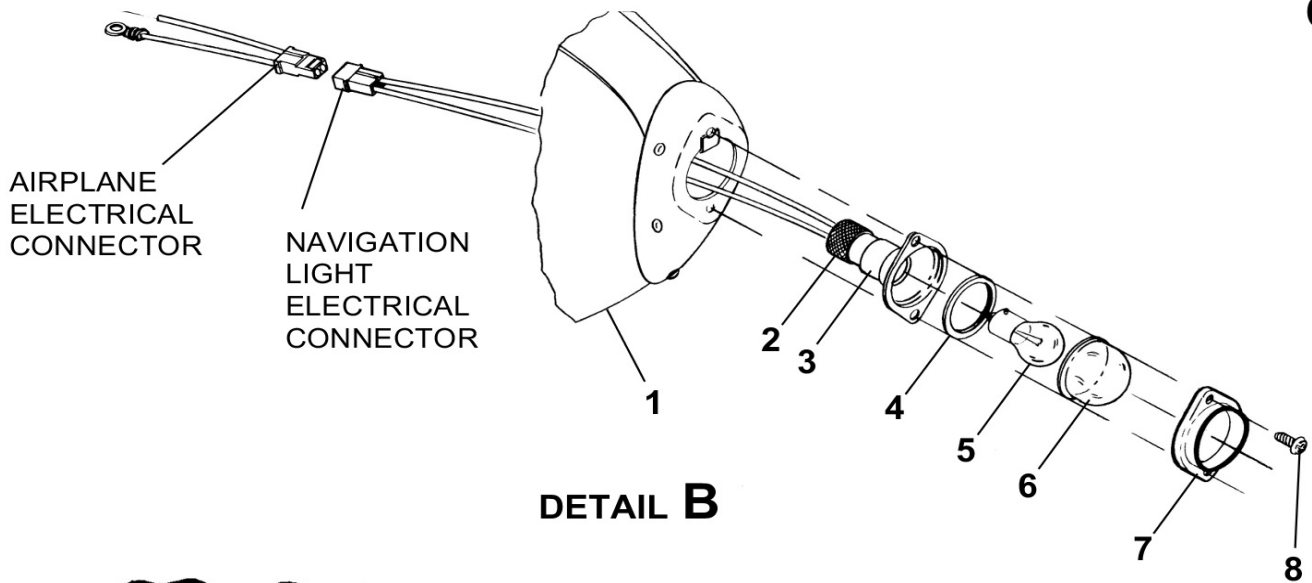
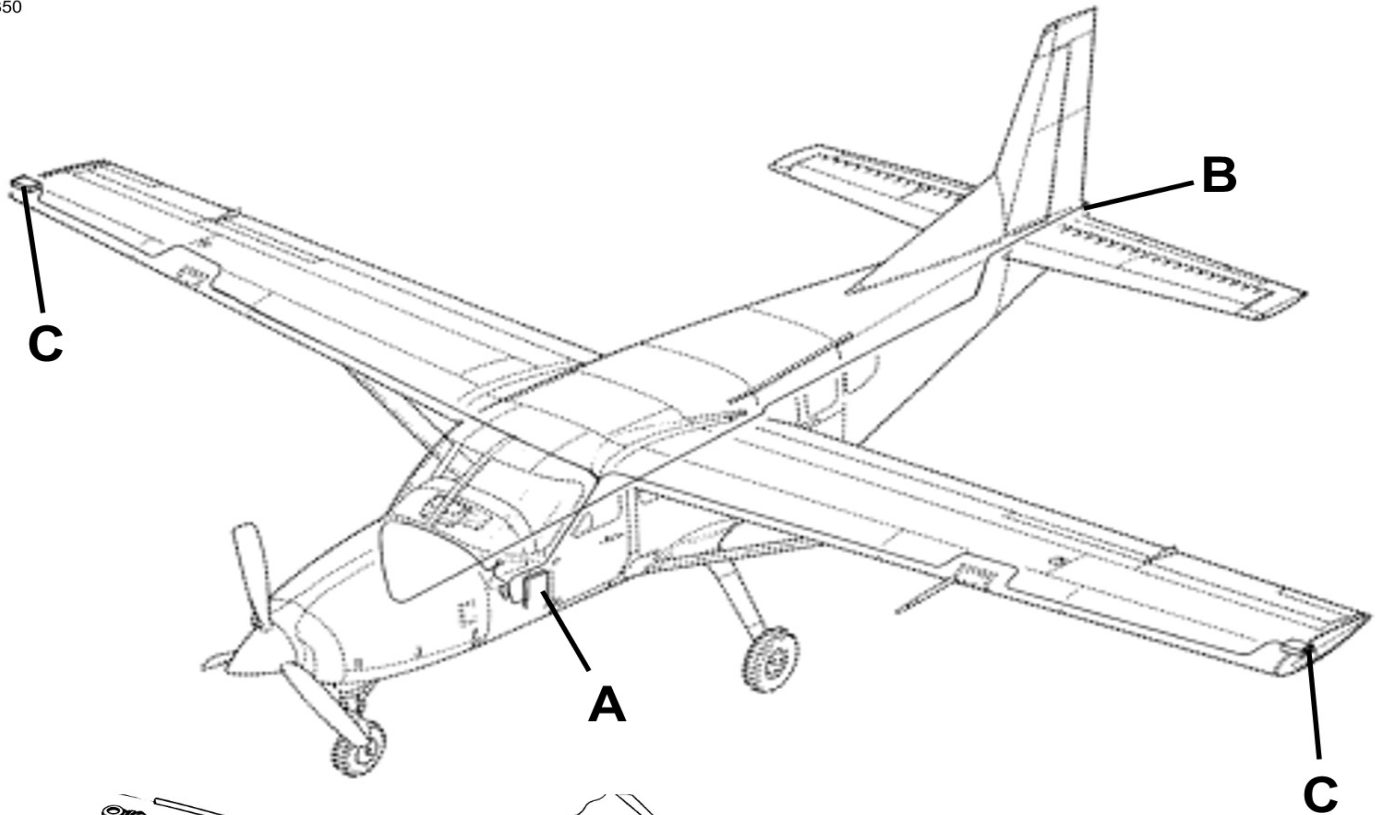
- A. Remove Stinger Navigation Light (Refer to Figure 201).
- (1) Remove screws (8), lens retainer (7), lens (6), and gasket (4).
 - (2) Press in on bulb (5) and turn counterclockwise to remove bulb.
 - (3) Pull socket (3) from stinger and unscrew from the cap (2) to remove socket (3).
 - (4) To remove the cap (2) do the steps that follow:
 - (a) Remove the stinger from the airplane sufficiently to get access to the navigation light cap (2) electrical connectors. Refer to Chapter 53, Tail Stinger - Maintenance Practices.
 - (b) Disconnect the navigation light electrical connector from the airplane wiring harness electrical connector.
- B. Install Stinger Navigation Light (Refer to Figure 201).
- (1) Screw cap (2) on socket (3).
 - (a) If an insulator cap is installed, use Silastic 738 to seal the end of the stinger navigation light. Refer to the Model 208 Wiring Diagram Manual, Chapter 20-10-10 Sealing of Electrical Connectors - Maintenance Practices for additional information.
 - (b) Make sure the light assembly is installed with the insulator pointing down to help keep moisture out of the insulator cap.
 - (2) Put the stinger sufficiently near its correct position on the aft of the airplane to get access to the airplane wiring harness electrical connector and the cap (2) navigation light electrical connector.
 - (a) Connect the cap (2) navigation light electrical connector to the airplane electrical connector.
 - (3) Install the stinger on the aft of the airplane. Refer to Chapter 53, Tail Stinger - Maintenance Practices.
 - (4) Press bulb (5) into socket (3) and turn clockwise.
 - (5) Place socket (3) in position in stinger, then install gasket (4), lens (6), and lens retainer (7) with screws (8).

3. Wing Tip Navigation Light Removal/Installation

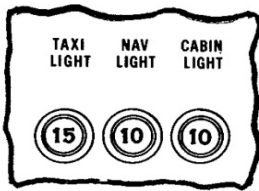
- A. Remove Wing Tip Navigation Light (Refer to Figure 201).
- (1) Remove screws (7), lens retainer (6), and lens (8).
 - (2) Press in on bulb (9) and turn counterclockwise to remove bulb.
- B. Install Wing Tip Navigation Light (Refer to Figure 201).
- (1) Press bulb (9) into lamp socket (11) and turn clockwise.
 - (2) Install lens (8) and lens retainer (6) with screw (7).

Figure 201 : Sheet 1 : Navigation Lights Installation

A22350



DETAIL B



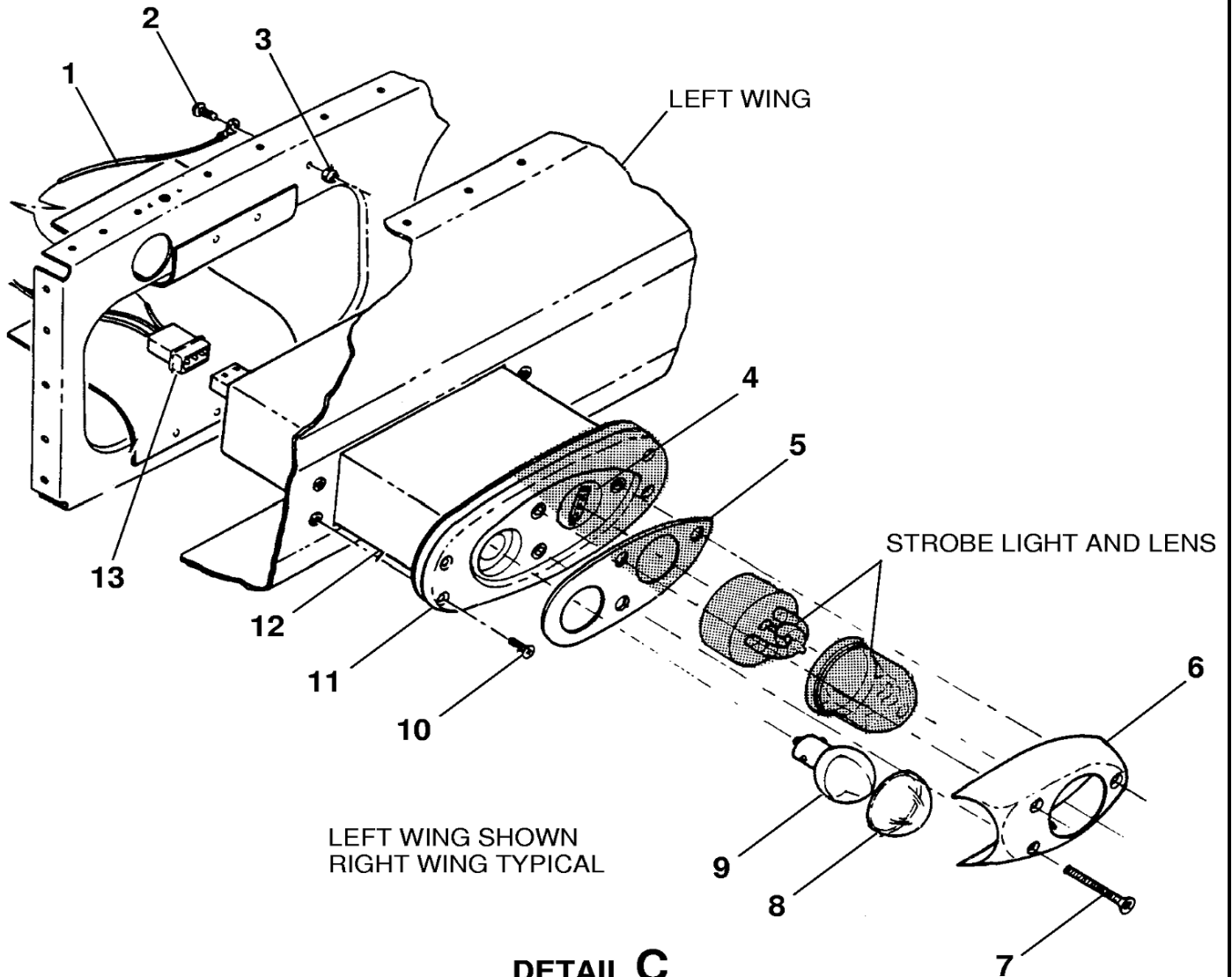
DETAIL A

1. STINGER
2. CAP
3. SOCKET
4. GASKET
5. BULB
6. LENS
7. RETAINER
8. SCREW

2618R4003
 A2618R1162
 B2618R2001

Figure 201 : Sheet 2 : Navigation Lights Installation

A22351



C2618X1163